

CCL26 Antibody (C-Term)
Purified Rabbit Polyclonal Antibody (Pab)
Catalog # AP22319b**Specification**

CCL26 Antibody (C-Term) - Product Information

Application	WB, FC,E
Primary Accession	Q9Y258
Reactivity	Human
Host	Rabbit
Clonality	polyclonal
Isotype	Rabbit IgG
Calculated MW	10648

CCL26 Antibody (C-Term) - Additional Information**Gene ID** 10344**Other Names**

C-C motif chemokine 26, CC chemokine IMAC, Eotaxin-3, Macrophage inflammatory protein 4-alpha, MIP-4-alpha, Small-inducible cytokine A26, Thymic stroma chemokine-1, TSC-1, CCL26, SCYA26

Target/Specificity

This CCL26 antibody is generated from a rabbit immunized with a KLH conjugated synthetic peptide between 58-92 amino acids from the human region of human CCL26.

Dilution

WB~~1:2000

FC~~1:25

E~~Use at an assay dependent concentration.

Format

Purified polyclonal antibody supplied in PBS with 0.09% (W/V) sodium azide. This antibody is purified through a protein A column, followed by peptide affinity purification.

Storage

Maintain refrigerated at 2-8°C for up to 2 weeks. For long term storage store at -20°C in small aliquots to prevent freeze-thaw cycles.

Precautions

CCL26 Antibody (C-Term) is for research use only and not for use in diagnostic or therapeutic procedures.

CCL26 Antibody (C-Term) - Protein Information**Name** CCL26 ([HGNC:10625](#))

Function Chemoattractant for eosinophils and basophils (PubMed:[10415065](#), PubMed:[10488147](#)). Acts as a ligand for C-C chemokine receptor CCR3 which triggers Ca(2+) mobilization in eosinophils (PubMed:[10415065](#), PubMed:[10488147](#), PubMed:[11425309](#)). Also acts as a ligand for CX3C chemokine receptor CX3CR1, inducing cell chemotaxis (PubMed:[20974991](#)).

Cellular Location

Secreted.

Tissue Location

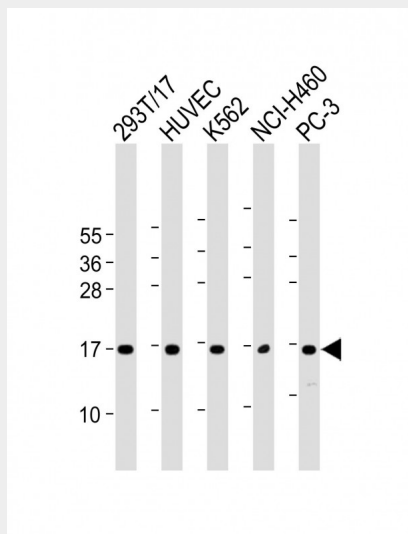
Ubiquitously expressed at low levels in various tissues including heart and ovary.

CCL26 Antibody (C-Term) - Protocols

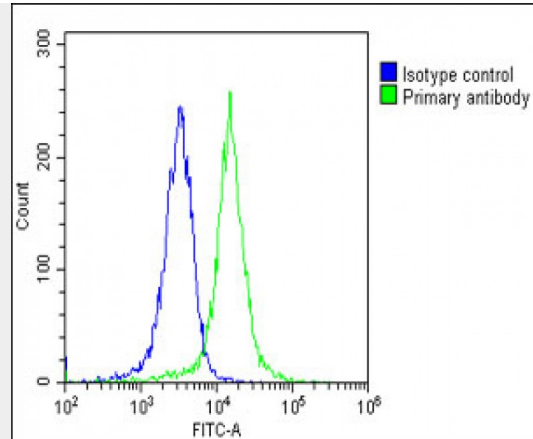
Provided below are standard protocols that you may find useful for product applications.

- [Western Blot](#)
- [Blocking Peptides](#)
- [Dot Blot](#)
- [Immunohistochemistry](#)
- [Immunofluorescence](#)
- [Immunoprecipitation](#)
- [Flow Cytometry](#)
- [Cell Culture](#)

CCL26 Antibody (C-Term) - Images



All lanes : Anti-CCL26 Antibody (C-Term) at 1:2000 dilution Lane 1: 293T/17 whole cell lysate Lane 2: HUVEC whole cell lysate Lane 3: K562 whole cell lysate Lane 4: NCI-H460 whole cell lysate Lane 5: PC-3 whole cell lysate Lysates/proteins at 20 µg per lane. Secondary Goat Anti-Rabbit IgG, (H+L), Peroxidase conjugated at 1/10000 dilution. Predicted band size : 11 kDa Blocking/Dilution buffer: 5% NFDM/TBST.



Overlay histogram showing K562 cells stained with AP22319b(green line). The cells were fixed with 2% paraformaldehyde (10 min) and then permeabilized with 90% methanol for 10 min. The cells were then incubated in 2% bovine serum albumin to block non-specific protein-protein interactions followed by the antibody (AP22319b, 1:25 dilution) for 60 min at 37°C. The secondary antibody used was Goat-Anti-Rabbit IgG, DyLight® 488 Conjugated Highly Cross-Adsorbed(1583138) at 1/200 dilution for 40 min at 37°C. Isotype control antibody (blue line) was rabbit IgG1 (1µg/1x10⁶ cells) used under the same conditions. Acquisition of >10, 000 events was performed.

CCL26 Antibody (C-Term) - Background

Chemotactic for eosinophils and basophils. Binds to CCR3.

CCL26 Antibody (C-Term) - References

Guo R.F.,et al.Genomics 58:313-317(1999).
Shinkai A.,et al.J. Immunol. 163:1602-1610(1999).
Kitaura M.,et al.J. Biol. Chem. 274:27975-27980(1999).
Wang Z.,et al.Submitted (OCT-1998) to the EMBL/GenBank/DDBJ databases.
Berg E.L.,et al.Submitted (APR-1999) to the EMBL/GenBank/DDBJ databases.